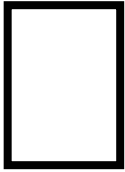


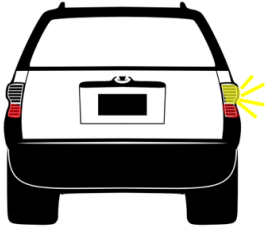
STRATEGIES TO IMPROVE SAFE DRIVING

Integrate these safe driving habits to decrease driving risk.



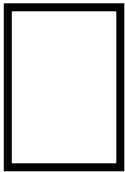
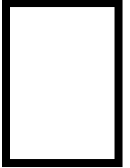
Rolling Stop

It is important to come to a complete stop at all stop signs before proceeding.



Turn Signals

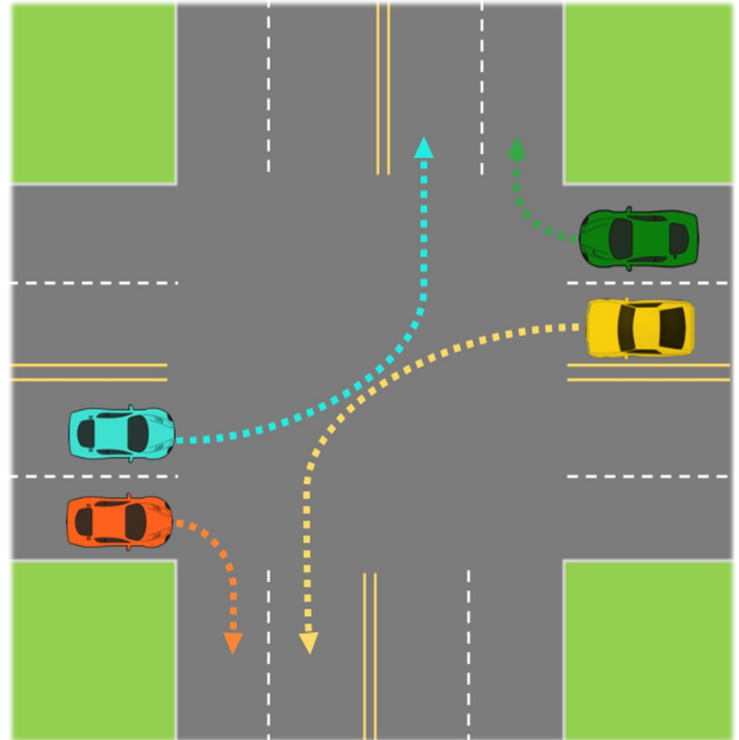
Using your turn signal tells other drivers where you are headed, improving your communication to drivers. Make sure it is on at least 3 seconds before the turn.



Correct Turning Lane

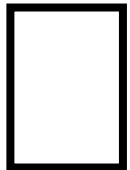
NC law* states that drivers must turn into the same lane from which they are coming. If turning from the left lane you must enter into the left lane on the next road. If turning from the right lane you must turn into the right lane on the next road.

*this law differs by state



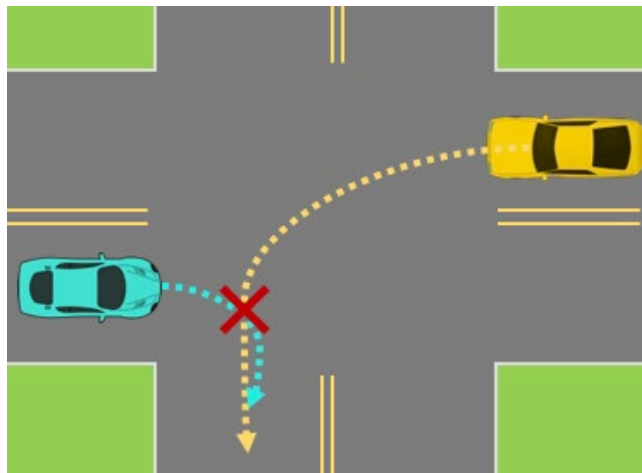
Speed

Watch your speed! Going too slow – 15-20 mph under the limit – can be as dangerous as going too fast.



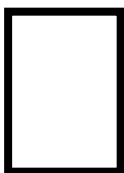
Correct Stopping Distance

You should see the tires on the road of the vehicle on front of you. Leaving appropriate stopping distance allows you 1) to move around a stopped vehicle and 2) prevents a collision with the vehicle in front of you if you get bumped from behind.



Care When Turning on Red

Use caution when completing a right turn on red. Take the time to bring your vehicle to a complete stop, look around carefully, and proceed only when safe to do so.



Correct Use of a Roundabout

Before entering a roundabout, yield or stop to make sure no other cars are coming and use your turn signal to inform other drivers of where you are headed. When you enter and exit a roundabout, always turn right.

